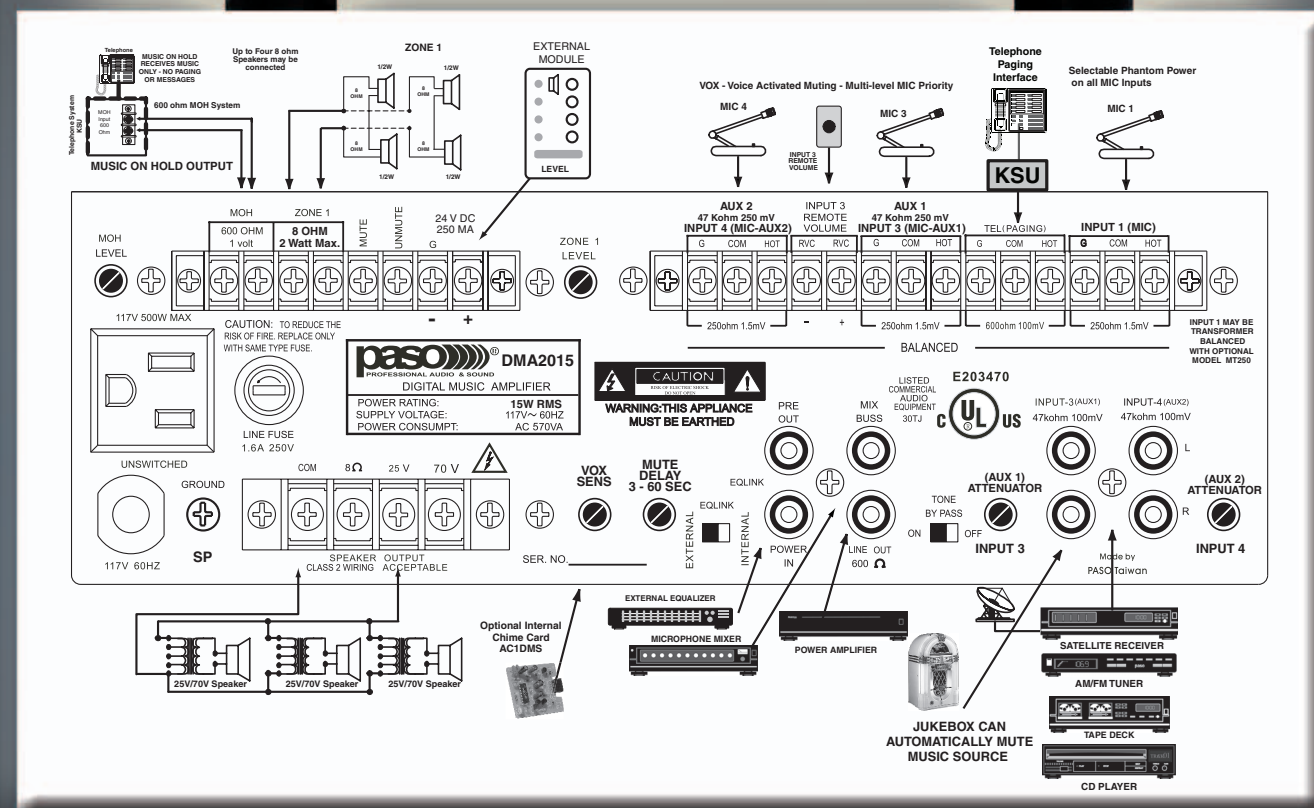


CONNECTIVITY - APPLICATIONS



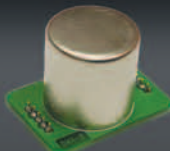
ACCESSORIES



27/3500 - Standard 19" Rack Mounting Kit. Complete with hardware. Black Finish. 2 Units of Rack vertical space.



AC1/DMS - Internal Plug-in Dual tone Chime Card. Mounts on main printed circuit board of Amplifier. Provides a Dual Tone Electronic Chime each time the Mute terminals are closed.



MT250 - 250 Ohm Balanced Input Microphone Transformer. Mounts on printed circuit board of Amplifier. Operates on INPUT 1 only.

AUTHORIZED DISTRIBUTOR



PROFESSIONAL AUDIO & SOUND
 PASO SOUND PRODUCTS, INC.
 4750F GOER DRIVE
 CHARLESTON, SOUTH CAROLINA 29406-6511 USA
 Phone: 843 308 9005 - Fax: 843 308 0904
 EMAIL: info@pasosound.com - URL: www.pasosound.com
 FORM ED 289 RV 1.0 2004 Printed in USA

COMPACT DMA

DIGITAL MUSIC AMPLIFIERS



DMA SETS NEW STANDARDS FOR DIGITAL MUSIC REPRODUCTION

DMA2015 - 15 W INTEGRATED AMPLIFIER

DMA2030 - 30 W INTEGRATED AMPLIFIER

DMA2060 - 60 W INTEGRATED AMPLIFIER

DMA2120 - 120 W INTEGRATED AMPLIFIER

- ❑ ULTRA WIDE POWER BANDWIDTH
- ❑ UNMEASURABLE DISTORTION CHARACTERISTICS
- ❑ HIGH RELIABILITY AND EXCEPTIONAL PERFORMANCE
- ❑ ADDRESSABLE VOX AND MUTING SYSTEM
- ❑ INDEPENDENT MOH AND 2ND ZONE OUTPUT
- ❑ INTELLIGENT INPUT/OUTPUT VERSATILITY
- ❑ AUTOMATIC LOAD MANAGEMENT SYSTEM
- ❑ POWER SURGE AND OVERLOAD PROTECTION

Engineering leadership in sound products since 1931



PROFESSIONAL AUDIO & SOUND



SPECIFICATIONS

POWER OUTPUT:	DMA2015	15 Watt RMS
	DMA2030	30 Watt RMS
	DMA2060	60 Watt RMS
	DMA2120	120 Watt RMS
Distortion:	0.01% THD at 1 kHz rated power	
Frequency Response:	20 Hz - 30 KHz ± 2 dB	
Inputs:		
Input 1	MIC Electronically Balanced, Transformer Balanced with MT250 (optional)	
Input 2	Telephone Transformer Balanced	
Input 3	MIC Electronically Balanced - AUX 1 (Stereo Summing)	
Input 4	MIC Electronically Balanced - AUX 2 (Stereo Summing)	
Sensitivity & Z:		
Input 1	Mic 1 = 1.5 Mv - 250 ohm	
Input 2	Tel=100 Mv - 600 ohm - Transformer Balanced	
Input 3	Mic 3 = 1.5 Mv - 250 ohm - AUX 1 = 100 Mv - 47K ohm	
Input 4	Mic 4 = 1.5 Mv - 250 ohm - AUX 2 = 100 Mv - 47K ohm	
Input Attenuator:	AUX 1 and AUX 2	
Phantom Power:	All Microphone Inputs by internal jumper (18 V)	
Hum & Noise:	Mic -70 db, Aux -75 db 600 ohm Transformer balanced	
Telephone Paging Input:		
EQ LINK:	Preamp. out, Power Amp in with EQ Link Switch	
Line Outputs:	Line Out 600 ohm - 1.5 V loaded	
Inputs/Outputs:	MIX BUSS	
Music on Hold Output:	600 ohm-1 Volt Transformer Balanced	
Zone 2 Output:	2 Watt Max. - 8 ohm with Control	
Main Output Impedance:	8 ohm, 25 Volt and 70 Volt line	
Controls:		
Front Panel:	Input 1 Volume, Input 2 Volume, Input 3 Volume, Input 4 Volume, Bass and Treble	
Rear Panel:	AUX 1 Attenuator - AUX 2 Attenuator, VOX Sensitivity - MOH/ZONE 1 Level Control - ZONE 2 Level Control - VOX Sensitivity - MUTE Delay	
Tone Controls:	Bass and Treble ± 10 dB at 100 hZ and 10 KHz	
Tone By-Pass:	On - Off Switch Rear Panel	
Remote Volume Control:	INPUT 3 - AUX 1 Input Volume	
MOH Source Selection:	AUX 1 and AUX 2	
Zone 2 Source Selection:	AUX 1 and AUX 2	
VOX BUSS:	Available on all Inputs by internal Jumper	
MUTE BUSS:	Available on all Inputs by internal Jumper	
MUTE DELAY:	Adjustable from 3 Sec to 60 Sec (rear panel control)	
Direct Muting:	External Contact Closure	
Unmuting:	MUTES/UNMUTES MIC 1 only	
Power Supply Output:	24 V DC - 250 mA Regulated	
Rack Mounting:	Optional 19" Rack Kit	
Internal Cooling Fan:	Thermally Controlled - Models DMA2060, DMA2120	
Protection:	Power Surge, Overload and Thermal Protection	
Power Requirement:	117 Volt, 50-60 hZ	
Power Consumption:	DMA2015 = AC = 570 VA - DMA2030 = 600 VA DMA2060 = 670VA - DMA2120 = 850VA Max.	
AC Accessory Outlet:	117 v - 500 W Max. Unswitched	
Terminations:	Screw Terminals, RCA Jacks	
Housing Finish:	Black	
Output Power Indicator:	Multi-color LED Signal and Clip	
Dimensions:	10.75" W., 11" D., 4" H. with feet (274X280X102 mm) 3.5" H (89 mm), less feet	
Net Weight:	DMA2015 = 9.8 Lbs (4.5 Kg) - DMA2030 = 11.75 Lbs (5.4 Kg) DMA2060 = 12.5 Lbs (5.7 Kg) - DMA2120 = 14.25 Lbs (6.5 Kg)	

CAPABILITY - FEATURES



The New DMA SERIES is like no other Amplifier Line. Every component utilized is Heavy-Duty. Built tough to take the daily punishment required for continuous operation. DMA delivers Outstanding Sonic Performance at any level of rated power and with any Speaker System Load. Breakthrough Technology is applied to every critical Circuitry from Power Surge Protection and Speed Controlled Fans for Thermal Protection to massive High Current Power Supplies. The Load Management System has the ability to adapt the power transfer to specific speaker loads. By delivering more current on demand to the Output Stages when Peak Power is needed the Amplifier will automatically provide the additional Reserve Headroom required. Sound purity is maintained with lower distortion for "Heavier Bass" and "Clearer Highs". Four models from 15 Watt to 120 Watt.

Inputs - Input 1 is set as Microphone Input. Impedance is 250 ohm electronically balanced. This Input may be Transformer balanced by using the optional Transformer Model MT250.

Input 2 is Phone Paging to interface with a Phone System. Input Impedance is 600 ohm, Transformer Balanced. A level control is available on the Front Panel.

Input 3 and 4 can be set at either MIC or AUX Level, (internal Switch/Jumper). Impedance is 250 ohm on MIC and 47 K on AUX.

Phantom Power - Provided on all Inputs set as MIC.

Stereo Summing - Two separate RCA Jacks are provided for Input 3 and 4 (Left and Right). A Stereo signal connected to either Input is buffered and internally summed to Mono.

Input 3 & 4 Attenuators - When the Inputs are set as AUX 1 and AUX 2 the input sensitivity may be varied by a rear panel Variable Attenuator. This feature allows to set the output level of Programs originating from different sources (CD, Satellite Receiver, etc.).

MIX BUSS - This Input/Output may be utilized to parallel two amplifiers or as an input for a Microphone Mixer or other audio source. When used as an Input the Amplifier Level and Equalization Controls have no effect.

Line Out - 600 ohm, 1.5 Volt Line Output.

Remote Volume Control - The INPUT 3/AUX 1 Input Volume may be adjusted from a remote location. Remote Volume Inputs utilize a 10K Pot and are immune to Audio Interference (DC Operation).

Addressable VOX System - The VOX System can be individually selected to operate independently on all 4 Inputs by means of jumpers.

Addressable Muting System - All Inputs may be set to be Muted when the Vox is activated.

Direct Muting/Unmuting System - The MUTE function may be activated by external contacts. MIC 1 Input may be set to normally off and turned-on by shorting the Unmute Terminals.

MUTE Adjustable Delay - A rear panel control adjusts the MUTE Time Delay from 3 Sec. to 60 Sec. Particularly useful to control the length of time that an Input mutes another (for example AUX 1 over AUX 2).

Music on Hold - Output Channel 1 - Channel 1 provides a 1 Volt, 600 ohm Transformer Balanced Output. Internal Jumper selects the source from either AUX 1 or AUX 2. Level Control is provided.

Output Channel 2 - Channel 2 provides a 2 Watt Max., 8 ohm output for Zone 2 Speaker Output. Internal Jumper selects the source from either AUX 1 or AUX 2. Level Control is provided.

Internal Chime Card - An optional Chime Card Model AC1DMS is available. When the Direct Muting is activated the Chime is turned-on.

EQ LINK - EQ Link (Preamp. Out) (Power Amp In) jacks are provided for External Equalizer. Activated by the EQ Link Switch.

Tone By-Pass Switch - The Tone by-pass switch defeats the setting of the Treble and Bass Controls. Should be used when an External Equalizer is utilized.

24 VDC Supply Output - A 24 Volt DC, 250 mA regulated Power Supply with dynamic filter is provided for external accessories

COMPACT
DMA
DIGITAL MUSIC AMPLIFIERS

© copyright Paso Sound Products, Inc. 2004



PASO
PROFESSIONAL AUDIO & SOUND